



# ANNUAL REPORT

2019



*Inspired Learning. Inspiring Lives.*

# CONTENTS

CLICK ON SECTION HEADING TO GO DIRECTLY TO PAGE

1	Our vision
2-4	Why young people need our support
6	Key highlights
7	Chair's words
8	Chief Executive's words
9-10	Aligning our work with New Zealand's Child and Youth Wellbeing Strategy
11-12	Today's challenges
13	Our Strategy
15-16	Extending our reach
19	Our Healthy Harold programme
20	Supporting young people through life's challenges
21	Our philosophy
22	Our integrated approach to supporting schools
23	Healthy Harold programme outcomes
24	Extending learning outside of the mobile classroom
25-26	Healthy Harold regional activity
29-30	The SMASHED PROJECT
31	How the SMASHED PROJECT works with schools
32	The SMASHED PROJECT programme outcomes
33-34	Our tour map
37-38	Our journey
39-40	Our founder
41	Our people
42	Our regional teams
43-44	Meet some of our team
45-46	Volunteer recognition
47-48	Community partnerships
49-50	Local Healthy Harold supporters
51-52	Volunteer truck drivers





### Growing up isn't easy!

Young people face many challenges growing up in our complex and changing society.

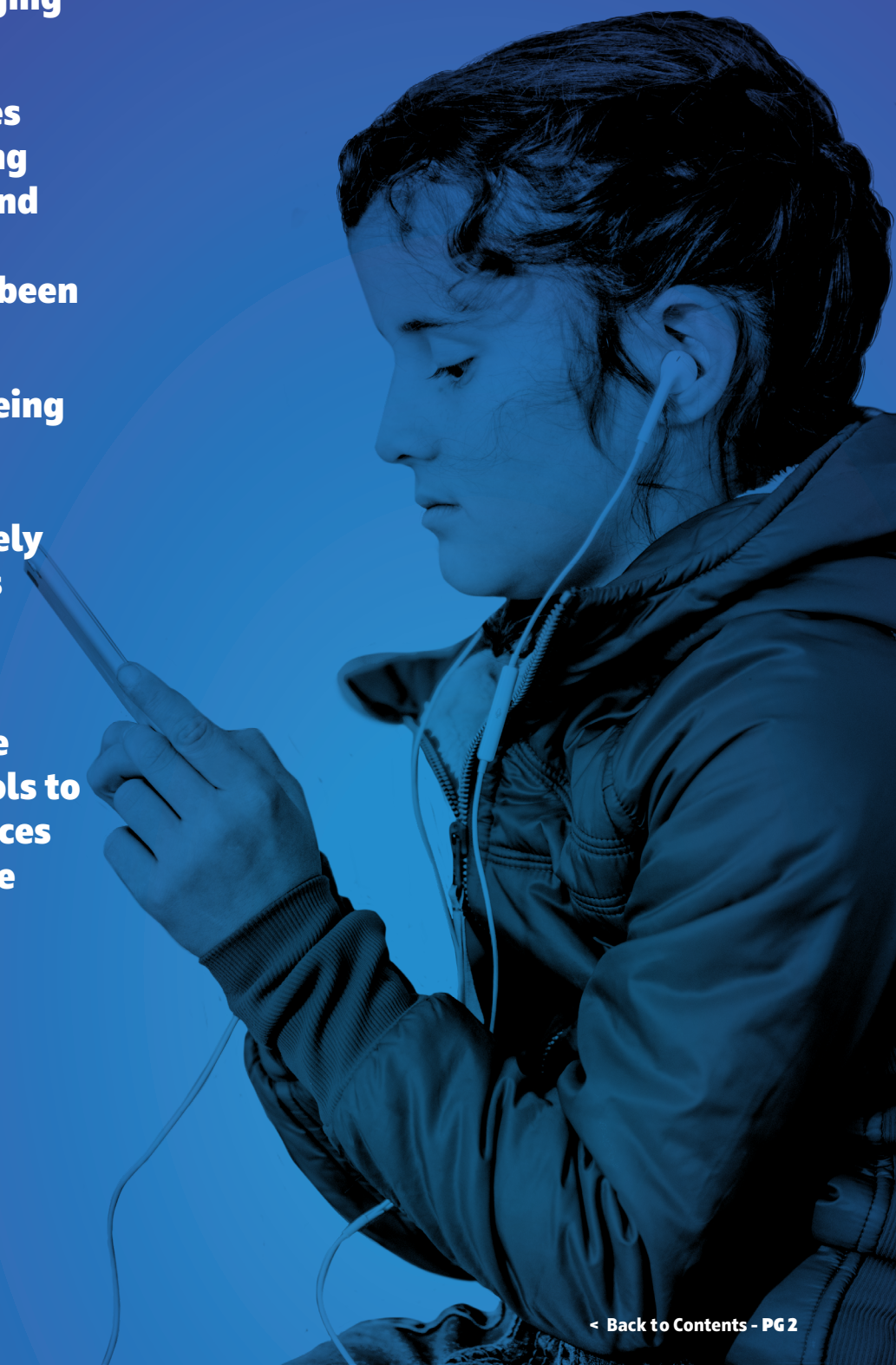
With the challenges of today, supporting children's health and wellbeing as they develop has never been more in need.

Your health, wellbeing and behaviours developed as a young person largely shape your success throughout life.

Life Education gives young people knowledge and tools to make positive choices both now and in the future.

# OUR VISION

Inspiring  
tamariki and  
rangatahi to  
make positive  
choices.





# WHY YOUNG PEOPLE NEED OUR SUPPORT

## Significant health issues of young people in New Zealand:

- New Zealand suicide deaths reached their highest level since records began 12 years ago. The youth suicide rate rose dramatically and tragically those aged 15 to 19 years old increased 38%. (Chief Coroner 2019)
- New Zealand has one of the highest child obesity rates and we know this leads to poor mental health, higher incidences of being a victim of bullying and lower educational achievement. (Taking Action on Childhood Obesity, WHO, 2016)
- Thirty percent of children aged 13 or less have tried alcohol and 18% of that group say they 'currently drink', with nearly 7% saying they have been 'binge drinking' in the last four weeks. (The University of Auckland Youth 2000 Series)
- Youth experience high levels of anxiety, depression and psychological distress. Within 15-24 year olds 19% reported moderate to severe depression, 12% reported moderate to severe anxiety and 36% reported medium-high levels of psychological distress within a 2-4 week period. (HPA Wellbeing and Mental Distress in Aotearoa NZ: Snapshot 2016)

**We need to keep our young people happy and healthy. They need to feel empowered to make positive choices, and to know how to look after their physical and mental health.**

**This is why Life Education exists.**

## Making a difference to the lives of tamariki and rangatahi for 32 years

The need to support the health and wellbeing of young people saw Life Education begin its journey 32 years ago.

Today, we are New Zealand's largest health education provider in schools. We were named the leading external health provider, used in 86% of schools in the National Monitoring Study of Student Achievement published in 2018 by the Ministry of Education.

Our Healthy Harold programme is available nationwide, delivering tailored interactive learning experiences in primary and intermediate schools. Using our mobile classrooms students are able to explore education outside of their classroom. Their experiences with our specialist teachers, unique technology and interactive resources make our lessons memorable and engaging.

In 2019 we furthered our impact, launching SMASHED to secondary schools. SMASHED is designed to equip young people with the information, awareness and confidence to make responsible choices around alcohol. Using powerful live theatre and interactive workshops, SMASHED engages students demonstrating the affects that alcohol can have on young people's lives. It allows them to explore the facts about underage drinking and develop strategies for resisting peer pressure while in a safe learning environment.

The launch of SMASHED has taken the Life Education experience into new environments with new audiences. This exciting step has pushed us as an organisation to begin paving the way for further growth and exploration into additional new programmes.

Throughout 2019 we investigated the financial education programmes in schools and the limited outcomes these were achieving. We finished the year with a goal to implement new initiatives to address this in 2020.







**"Mental health is a robust state to be grown and nurtured in children – even from the time of conception – by parents, whānau, schools and the community."**

**"This means promoting resilience to the inevitable exposure to emotional stresses and building self-control skills in early childhood and primary years."**

Sir Peter Gluckman

## KEY HIGHLIGHTS OF 2019 AT A GLANCE



We reached 262,616 children across New Zealand through Healthy Harold and SMASHED.

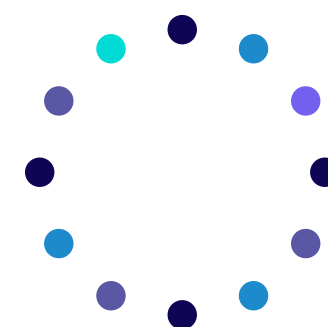


Supported by Cigna Insurance we launched Small Changes, a resource designed to encourage families to spend more quality time together.



We extended to secondary schools, launching the SMASHED PROJECT in New Zealand, promoting responsible attitudes towards alcohol.

Life Education was named the leading external health provider in primary and intermediate schools in the National Monitoring Study of Student Achievement report, used in 86% of schools.



We updated many of our take home resources so they are specially designed to get families involved in children's learning.

We joined forces with award winning New Zealand author Avril McDonald to create a video series focused on resilience, which is now available on Heihei and Air New Zealand in-flight entertainment.



We expanded our brand into new audiences and updated our branding to reflect this.



# CHAIR'S WORDS

## PAT SEYMOUR - QSO, OBE

**Life Education Trust NZ (LETNZ) has had another very successful year supporting the many Trusts and Educators up and down New Zealand and developing new initiatives for Year 9 and 10 students.**

The National Board continues to support the National Service Centre team in their role ensuring educational curriculum, financial obligations and operating standards are set and maintained for all the Trusts and Educators. The team continues to consider and pursue new initiatives consistent with the vision of Life Education.

In 2019 Life Education launched our first Theatre-in-Education programme into secondary schools reaching Year 9 students, which was a major achievement. The SMASHED PROJECT programme designed for Year 9 students looks at the impact of drinking alcohol and peer pressure. We also began work on SMART\$, a financial education programme for Year 10 students, which will be available in schools in 2020. Trustees with a background in the financial field have been most helpful as a curriculum for SMART\$ is developed.

To ensure that the widely recognised 'Harold' brand remained strong in its role in primary and intermediate schools, but to enable expansion into new audiences, a brand refresh process was undertaken. The Board and the Chief Executive sought independent expertise in brand development and considered our values, attributes and the positioning of Life Education in today's world. Extending Life Education's reach and relevance into secondary schools has seen LETNZ develop a credible suite of programme brands, under an updated corporate Life Education brand.

We welcomed new Board members Jeff Hart and Jacqueline Taylor who both bring financial skills to the group. Jacqueline, a teacher by profession, has developed learning resources for adults in the investment field. On behalf of the Board I thank them both for making time to join us in the interests of Life Education.

The Board farewelled John Benton who served six years and Chris Kirk-Burnnand nine years, with six as Chair of the National Board. We thank them both for the

huge commitment they each made to Life Education. Both had a wider vision for Life Education and brought a corporate background and their own strong financial background to the Board. I thank them sincerely for their wise counsel.

The national conference in July recognised several long serving committed Life Education supporters and bestowed Life Membership on them. Keith Trembath (Waikato East), Roger Scammell and Ray King (Mid South Canterbury), Janet Lean and Grant Coward (Taranaki). Each of these people have supported Life Education in various ways and made a significant contribution to the effectiveness of their local Trusts.

To all of our Educators, thank you for the commitment that you make to the children of NZ and to your work in the mobile classrooms. You are the public face of Life Education.

Thank you to all the Trustees, supporters and sponsors. Your energy and commitment enables Life Education to be the leading independent health education provider for school aged youth in New Zealand.

Thanks to our partners Mainfreight, The Warehouse Group, Cigna Insurance and our valuable charity gaming community partners, our Harold Club supporters and other sponsors. Your belief in our work and your consequential financial support is hugely important to the Trusts and ensures we can be there for children across the country. Thanks to Jarden Corporation for the very enjoyable Harold Club supporters evening hosted in their offices, and for their ongoing support.

Thanks to John O'Connell and the Service Centre team who collectively ensure the success of Life Education in New Zealand.

To my fellow Trustees, thank you all for your support of Life Education.

# CHIEF EXECUTIVE'S WORDS

LIFE EDUCATION TRUST NZ  
Inspired Learning. Inspiring Lives.

## JOHN O'CONNELL

**The Growing up of Life Ed is how we coined our evolution this year. The outcome saw us begin the pathway to expand into secondary schools, evolve our Trust's logo and create a new identity for Life Education Trust (NZ).**

That process began through the Board's strategy to identify future opportunities and what more Life Ed could be doing to support our tamariki and rangatahi. Children's Commissioner Judge Beecroft laid the challenge to us at our conference in 2018 and we responded.

With expertise from Jeff Clark we undertook a lengthy review engaging stakeholders including teachers and young people, to understand how the single brand identity we'd always used could expand across different audiences.

The result saw us strengthen our use of our icon Harold within our Healthy Harold programme in primary schools, but create a separate identity without Harold for Life Education Trust (NZ) to pursue older audiences and different programmes.

The outcome was to continue to invest in Healthy Harold, adopt a refreshed logo for Trusts, upload more than 100 new online resources, create new take home resources for children distributed through schools and release a new online substance education site for Years 7 and 8.

In secondary schools we launched Smashed – a Theatre in Education initiative. Smashed uses powerful live theatre and interactive workshops to engage students on the dangers of 'underage drinking'. Interactive workshops enable students to explore the facts about underage drinking and develop strategies for resisting peer influence. In New Zealand, 48.8% of those aged 15 years or under 'currently drink' and 21.4% report they

have participated in binge drinking in the last four weeks (Youth 2000 series, Auckland University). So we targeted year nine as the extension to our primary school work and in this first year one third of Year nine students took part. An outstanding result.

Through the year we investigated other impacts on young people's wellbeing and financial education became a focus. Poverty through poor financial decisions has an intergenerational impact on young people's health and wellbeing and there are significant gaps in New Zealand's financial education in schools. In 2020 we will launch new initiatives and importantly do so through collaboration in what is already a fragmented environment.

At a presentation during the year an elderly gentleman asked me why kids struggle so much today, when past generations lived through war and other hardships. Today's young people are exposed to a raft of daily information they simply don't have the maturity to comprehend or process. The result is stress, anxiety and uncertainty of where they fit in and that's presented in a range of statistics.

The Ministry of Education's National Monitoring Study of Student Achievement (NMSSA) identified that 86% of primary schools use Life Education to support their children's needs. This is a great validation of the important role we play in supporting children's wellbeing today, and that we are even more relevant after 32 years.



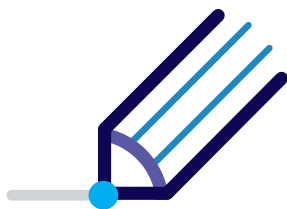
# ALIGNING OUR WORK WITH THE NEW ZEALAND CHILD AND YOUTH WELLBEING STRATEGY

Life Education Trust support the New Zealand Child and Youth Wellbeing Strategy and our work is aligned to the framework. Through our programmes we support the values and actions below:



**Children and young people are happy and healthy**

- We support children to build self-esteem and resilience.
- We teach children tools to have a good mental wellbeing and recover from trauma.
- We promote wellbeing in primary and intermediate schools.



**Children and young people are learning and developing**

- We help children to develop the social, emotional and communication skills they need as they progress through life into adulthood.
- We give children knowledge, skills and encouragement to achieve their potential and enable choices around their further education, encouraging them to reach for their dreams.

To view the full Child and Youth Wellbeing Strategy visit:  
[www.childyouthwellbeing.govt.nz](http://www.childyouthwellbeing.govt.nz)

**"A child without love is like a child trying to clap with one hand."**

Trevor Grice  
Founder of Life Education Trust



**Children and young people are involved and empowered**

- We teach children and young people how to make positive choices.
- We give children and young people knowledge about alcohol and substances so they can make positive informed decisions.



**Children and young people are accepted, respected and connected**

- We encourage acceptance and respect of others and teach children how to treat others with kindness.
- We teach children about stable and healthy relationships, and how to be a good friend.
- We work to help schools prevent and respond to bullying.

## TAMARIKI AND RANGATAHI FACE A LOT OF CHALLENGES IN THE WORLD WE LIVE IN.

# TODAY'S CHALLENGES



### OBESITY

"One in nine children (aged 2 to 14 years) are obese and a further 20% of children are overweight. 15% of Māori and 28% of Pacific children are obese."<sup>1</sup>

The effects of being overweight for a child include low self-esteem, bullying, eating disorders, chronic ill health and even suicide.

### We teach food and nutrition

Children learn how food gives them energy, how it helps them grow and how their body digests it. They explore the variety of nutrient-rich foods needed every day, what a balanced diet looks like and how to read packaging. Lessons may include science and human biology.

### We teach human biology

Children learn about body systems and how they work to carry food, water and oxygen around their body. Children explore their brain and the nervous system as the control centre for their body. They learn that stress affects people in a variety of ways.

### SUBSTANCE USE

"Approximately 11% of New Zealand high school students use substances at levels that are likely to cause them significant harm and may cause long-term problems. Students with very high substance use (including binge drinking) have more challenging family and school lives than others."<sup>2</sup>

### We teach about substances

We focus on the effects of alcohol and other drugs, both legal and illegal. Young people learn how to identify the difference between helpful and harmful substances, how substances can change the way the mind and body works, and how they can impact brain development. We teach about the consequences that substances can have on people's lives and explore different situations that young people may get into when taking them. Young people explore the power of advertising, peer pressure and social influences.

We want to provide young people with knowledge so they are empowered to make positive choices as they enter their teenage years. Our reach is wide in this teaching strand as we educate through our Healthy Harold programme in primary and intermediate schools, SMASHED in secondary schools and through our website [www.gbr.org.nz](http://www.gbr.org.nz) which provides online support for young people.



1. New Zealand Health Survey 2018/19.  
2. The Youth '12 National Health and Wellbeing Survey of New Zealand secondary school students.  
3. UNICEF Innocenti Report Card 14: Children in the Developed World.

### MENTAL HEALTH AND WELLBEING

"New Zealand has the worst teen suicide rate in the developed world... the number of adolescents reporting two or more psychological symptoms (feeling low, feeling irritable, feeling nervous, and having sleeping difficulties) is increasing."<sup>3</sup>

"Six out of ten girls are so concerned with the way they look they participate less in daily life – from going swimming and playing sports, to visiting the doctor, going to school or even offering their opinions."<sup>4</sup>



### We teach about relationships and communities

We focus on connecting and relating to others, with lessons looking at friendships and relationships as well as the need to show respect and consideration for others. Children learn about leadership and teamwork, coping with change, pressure and conflict, and digital citizenship. Bullying and cyber safety are often subjects schools request our expertise and support with.



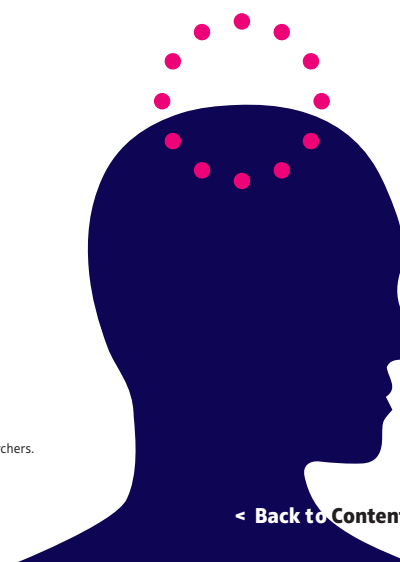
### BULLYING

"Rates of school bullying in New Zealand are among the worst worldwide. About one in three Year 4 students report being bullied on a weekly or more frequent basis. 94% of New Zealand teachers believe that bullying occurs in their school and 68% believed it begins very early in a child's life (between pre-school and Year 4)."<sup>5</sup>

"Nearly one in ten students have been afraid that someone would hurt or bother them in the past year."<sup>2</sup>

### We teach about identity and resilience

Confidence in their own identity and where and how they fit in are challenges that come with growing up. Children learn about feelings and emotions, and that they are special and unique and it is okay to be different. Value is placed on the idea that each individual's personality makes them unique and it shapes how they make decisions and respond to situations.



4. Effectiveness of a brief school-based body image intervention 'Dove Confident Me: Single Session' when delivered by teachers and researchers. Behaviour Research and Therapy 74. Philippa C. Diedrichs et al. (2015).  
5. Bullying in New Zealand Schools: A Final Report, Victoria University of Wellington. Vanessa A. Green et al. (2013).



# OUR STRATEGY

1.

## We will provide knowledge...

We will lead health teaching in schools and grow the number of tamariki and rangatahi we teach each year. We have an evidence based approach to our practice and strive to meet the individual needs of children in our communities. We will continue to evolve our unique and engaging learning experiences through our mobile classrooms and Theatre-in-Education programmes.

2.

## beyond the mobile classroom...

As health education specialists, we'll be recognised and sought after as leading practitioners. Through collaboration our resources and expertise will ensure we are supporting tamariki, rangatahi and families in every community.

3.

## to tamariki, rangatahi and families...

We want to be accessible, be relevant and topical, create a sense of community and be a source of information and support. Life Education will strengthen and extend our relationships with tamariki and rangatahi so they can make positive choices and reach their full potential.

By 2025 we will engage directly with 85% of tamariki and families each year.

**"Plant the seed  
of love in our  
children and they  
will blossom,  
grow and journey  
towards the  
greatest pathway  
of life."**

- Child and Youth Wellbeing Strategy





# EXTENDING OUR REACH

## New initiatives to meet our strategy

**In 2019 we focused on extending our resources to further support children’s learning while also encouraging families to get involved, enabling our messages to be spread further.**

## The Small Changes Whānau Challenge

Created in partnership with Cigna Insurance, the Small Changes Whānau Challenge launched in May brings families together by giving them fun and educational activities to do - helping them to focus on their health, wellbeing and family time together.

Small Changes centres around four key wellbeing pillars – connecting with each other, moving each day, nourishing your body and appreciating yourself and others. Families are challenged to do an activity each day for three weeks, helping them discover new activities to do together and incorporate into their daily lives in the future.

The challenge includes a take home activity pack which is given out to students in Years 5-6 in our Healthy Harold Programme, referring families to an interactive website full of fun and simple activity ideas.

[www.smallchanges.org.nz](http://www.smallchanges.org.nz)



## The Great Brain Robbery (GBR)

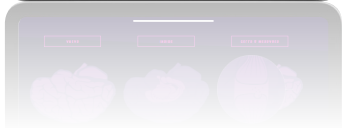
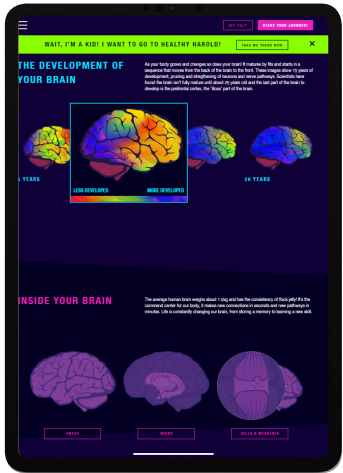
Our new interactive website was inspired by the book 'The Great Brain Robbery' co-written by our founder Trevor Grice, alongside Tom Scott, published in 1996.

The website takes the approach of 'no sugar coating, no voice of doom', giving young people factual information with the objective of providing a foundation to make their own informed choices.

GBR shows the process of the developing brain from five to 20 years, illustrating that the brain isn't fully developed until 25 years of age on average. It explains the different parts of the brain and how they work giving context to the brains complexity. It then moves on to talk about relationships and social influences, peer pressure, the importance of being assertive, and thinking about decisions and consequences. This flows into the A-Z of drugs, with an overview of each type of substance along with information about the classification, effects, addiction, medical use and other interesting facts.

Tying this learning through our programmes, a workbook has been created to help reinforce learning when young people work through the website – designed as part of our Healthy Harold Programme. GBR is also promoted as further learning for those participating in the SMASHED PROJECT.

[www.gbr.org.nz](http://www.gbr.org.nz)



## Collaborating to reach more tamariki

Life Education Trust and award winning Kiwi author Avril McDonald joined forces in Christchurch from 1-3 May to share her Feel Brave stories and strategies with five local schools.

The stories and strategies focus specifically on helping children deal with anxiety, build resilience, practice empathy and to self-regulate their emotions. Five story telling videos with powerful coping strategies were filmed and produced from Avril's visit which are now available on TVNZ's children's streaming site HEIHEI, as well as Air New Zealand's in-flight entertainment.

This project was made possible by the support of Cisco, Cigna and Westcon-Comstor, organisations who are passionate about improving the emotional wellbeing of New Zealand children.

**"Every child in New Zealand needs support to help build resilience to deal with adversity in their lives and for the children of Christchurch this is especially important with recent events,"**  
says John O'Connell,  
Life Education Trust  
Chief Executive





# OUR HEALTHY HAROLD PROGRAMME

**Our Educators visit schools around the country in our fleet of 45 mobile classrooms, along with our mascot Harold the giraffe.**

We use a range of technology to engage children's imaginations, teaching them how brilliant the human body is, about relationships and communities, and about resilience and their identities.

Children are excited to enter our mobile classrooms, where they have fun, engaging and memorable learning experiences.

Our specialist Educators are all registered teachers, who offer schools a shared planning approach to create tailored lessons to ensure we meet individual children's learning needs.

Ministry of Education research identified 86% of schools use our Healthy Harold programme because health is a subject teachers have less confidence teaching. Schools seek specialist support to get the very best outcomes to meet the needs of their children.



# SUPPORTING YOUNG PEOPLE THROUGH LIFE'S CHALLENGES

**We know that the challenges young people face are ever changing as our environment evolves and becomes more complex.**

This in turn means that we are always evolving the concepts and topics that we teach. To keep the knowledge of our specialist Educators up-to-date we provide continued professional development and look for opportunities to grow their knowledge on emerging topics.

As part of ensuring our programme addresses current issues with the development of our young people and to gain further insight, we conducted a survey of 2,370 children in Years 5 to 8, spread across the country.

**Our findings uncovered some key areas of concern:**



Six out of ten children say they have been bullied



ON AVERAGE  
**ONE**  
→ IN ←  
**FIVE**  
CHILDREN

SAY  
THEY ARE  
REALLY

**SAD**  
OR  
**STRESSED**  
ABOUT THINGS  
MOST OF THE TIME





# OUR PHILOSOPHY

Our philosophy is at the essence of everything we do.  
**Our three key principles are:**



## THE HUMAN BODY IS MAGNIFICENT

We capture children's imagination using technology that shows them the magnificence of the human body, how it functions and what its needs are. We illustrate how the earth provides these needs and teach how we should protect our internal and external environments.



## YOU ARE UNIQUE

Never before and never again will there be another person just like you. We try to make each child feel comfortable with their identity and to show them how special they are.



## WE NEED TO SUPPORT AND RESPECT EACH OTHER

Because of the delicate and complex nature of life, we need to support and respect every other person, regardless of sex, race, religion or beliefs.



# OUR INTEGRATED APPROACH TO SUPPORTING SCHOOLS

Through a shared planning approach with schools we support children in each school community.  
96% of teachers report they would recommend us to other schools in their area.



1

Schools book us 12 months in advance to their visit.

2

Our Educators liaise with teachers, discussing potential topics across our five learning strands and big questions.

3

Lessons are planned by our Educators to meet schools' individual needs and teachers are given classroom resources.

4

Students attend two to three lessons in mobile classrooms with our Educator and Harold.

5

Teachers provide feedback on how we meet their needs.

6

We review our practice and resources to reflect feedback and changing needs.

7

Teachers access our online portal throughout the year and integrate our resources into their classroom teaching.

8

Students continue learning through classroom resources and at home with their families using our activity packs.



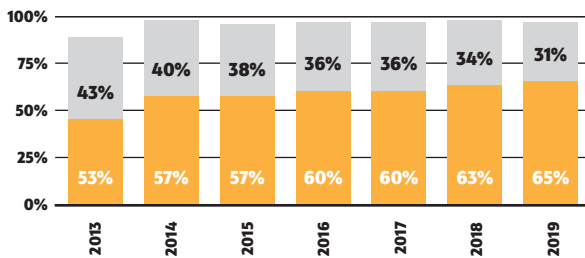
# HEALTHY HAROLD PROGRAMME OUTCOMES

To ensure we are meeting children’s learning needs and the requirements of teachers we work with, we continuously evaluate and measure the quality of our teaching and service.

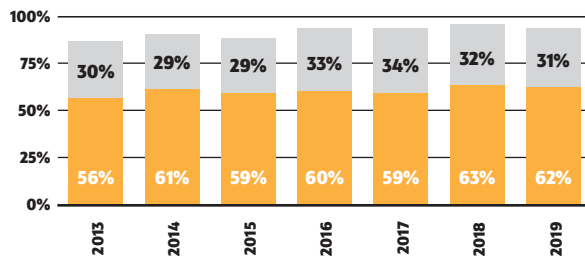
Teachers provide their feedback after lessons with Life Education through our system which is independently managed by Research New Zealand. In 2019 our teacher feedback found...

## WE MEET CHILDREN’S NEEDS

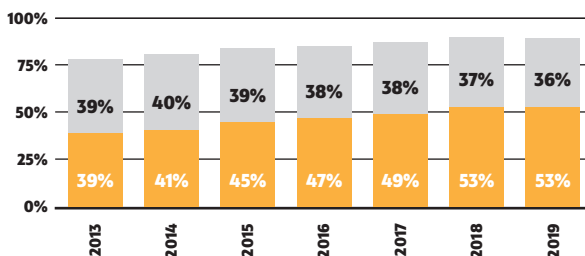
**1. Life Education helps provide children in my school with the information they need to make positive decisions.**  
Supporting our vision – inspiring tamariki and rangatahi to make positive choices.



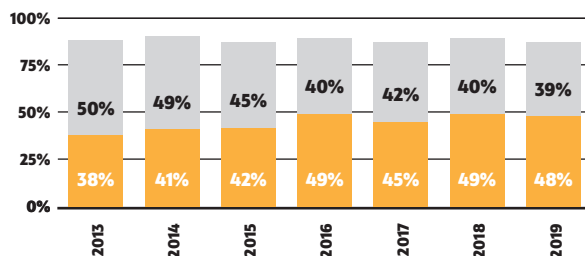
**2. The Educator created and delivered lessons that met the needs of the children in my class.**  
Through effective planning, we work to better meet the needs of children.



**3. Content tied in well with current classroom topic.**  
As an effective external provider we are an integral part of a school’s teaching.



**4. Teaching aids and resources are up-to-date**  
We continuously invest in quality teaching aids and education resources to keep us ahead in this quickly changing, technology driven environment.



## SCHOOLS RECOMMEND US TO OTHERS

96% of teachers agreed or strongly agreed that: \*

- Life Education provides children with useful skills for the future.
- I would definitely recommend Life Education to schools in my area.

**96%**  
of teachers would  
**DEFINITELY RECOMMEND**  
Life Education\*

# EXTENDING LEARNING OUTSIDE OF THE MOBILE CLASSROOM



## Take-home activity packs

In recent years with our focus on extending beyond the mobile classroom and reaching families we’ve redeveloped the way we do our take-home workbooks, progressing them into more interactive activity packs. The activity packs include more learning elements that encourage discussion and investigation with whānau.

In 2019 we created four new activity packs, which have had great feedback from teachers and parents. All of our students receive an activity pack or workbook after their visits to reinforce our teaching.



## Online resources

This year we grew the scope of our online resource portal significantly, adding 134 new resources for teachers, ensuring they can extend the Healthy Harold programme into their classrooms.

Our Educators provide relevant resources to teachers during their planning, and teachers are welcome to search our portal themselves to find additional teaching support.

As well as resources for teachers, we also provide web resources for children to access directly. Small Changes and GBR websites were launched during the 2019 year, and also in the year prior we launched the Healthy Harold website where children can use our food analyser or ask Harold health questions.



## IN 2019...

Teachers downloaded  
**10,132**  
online resources


Healthy Harold had  
**8,158**  
website users





# HEALTHY HAROLD REGIONAL ACTIVITY

TRUST	SCHOOLS INVOLVED	LESSONS TAUGHT	CHILDREN TAUGHT
Auckland Central	30	1,073	9,888
Auckland West	53	1,172	13,832
Canterbury	115	2,122	23,027
Central Plateau	32	328	3,423
Coastal Otago	49	651	5,714
Counties Manukau	92	2,506	26,977
Eastern Bay of Plenty	12	253	3,130
Far North	22	227	2,169
Gisborne, East Coast and Wairoa	72	563	4,766
Hamilton	32	592	6,142
Hawke's Bay	22	486	5,139
Heartland Otago/Southland	51	1,095	8,168
Hutt Valley	20	563	5,498
Kapiti/Horowhenua	18	520	3,620
Manawatu	57	592	6,674
Marlborough	49	445	4,123
Mid and South Canterbury	58	770	7,898
Nelson/Tasman	36	561	5,886
North Shore	32	1,343	13,222
North Wellington	22	461	5,094
Rodney	24	607	6,470
Rotorua Area	32	539	5,655
Southland	57	725	7,294
Taranaki	89	1,199	13,654
Waikato East	48	582	5,208
Waipa/King Country	29	627	6,591
Wairarapa Tararua & Central Hawke's Bay	29	282	2,068
Wanganui and Districts	41	750	4,865
Wellington City	24	587	4,835
West Coast	34	286	2,530
Western Bay of Plenty Region	43	1,331	12,835
Whangarei	28	539	5,758
	1,352	24,377	242,153




IN 2019

WE VISITED

1,352


SCHOOLS



TAUGHT

24,377

LESSONS



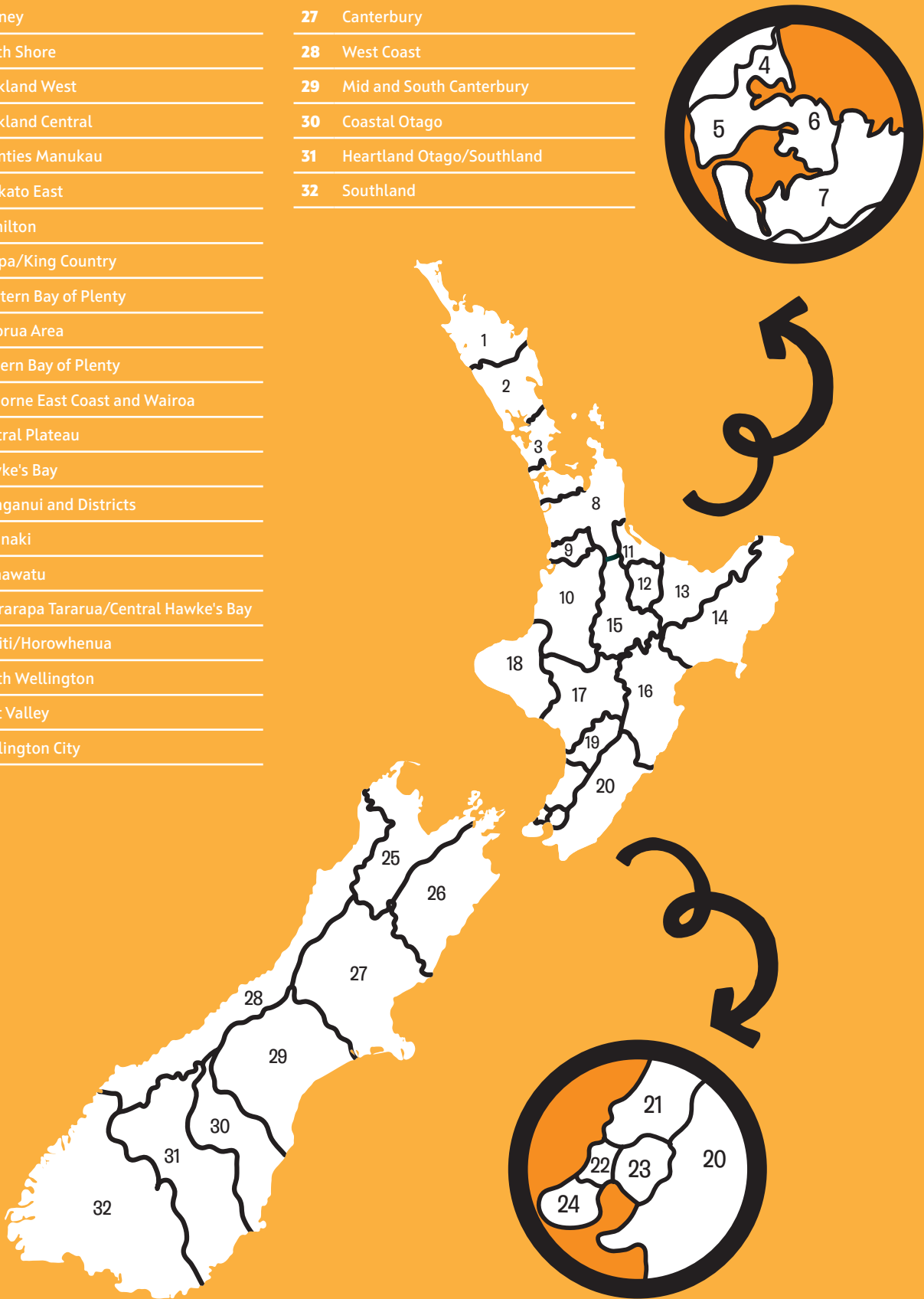
SEEING

242,153

CHILDREN

NORTH ISLAND	
1	Far North
2	Whangarei
3	Rodney
4	North Shore
5	Auckland West
6	Auckland Central
7	Counties Manukau
8	Waikato East
9	Hamilton
10	Waipa/King Country
11	Western Bay of Plenty
12	Rotorua Area
13	Eastern Bay of Plenty
14	Gisborne East Coast and Wairoa
15	Central Plateau
16	Hawke's Bay
17	Wanganui and Districts
18	Taranaki
19	Manawatu
20	Wairarapa Tararua/Central Hawke's Bay
21	Kapiti/Horowhenua
22	North Wellington
23	Hutt Valley
24	Wellington City

SOUTH ISLAND	
25	Nelson/Tasman
26	Marlborough
27	Canterbury
28	West Coast
29	Mid and South Canterbury
30	Coastal Otago
31	Heartland Otago/Southland
32	Southland





# SMASHED PROJECT

breaking underage drinking



breaking underage drinking

# THE SMASHED PROJECT

## Breaking the culture of underage drinking

The SMASHED PROJECT is a global educational theatre programme dedicated to reducing underage alcohol consumption. Using powerful live theatre and interactive workshops to engage students, SMASHED encourages attitudinal change towards underage drinking.

Young audiences follow the lives of three teens, witnessing how they become involved with alcohol and how it affects their lives. Interactive workshops enable students to explore the facts about underage drinking and develop strategies for resisting peer influence.

Identifying that there was a strong need for alcohol education in New Zealand schools, Life Education Trust (NZ) partnered with The Tomorrow Project to bring SMASHED to Aotearoa, launching in May 2019. The SMASHED PROJECT is now reaching nearly 209,000 young people each year in over 19 countries. SMASHED has a proven track record with strong evidence of its impact on alcohol education.

The SMASHED PROJECT team toured the country from Red Beach, down as far south as Mosgiel, reaching **94 schools** and educating **20,463 Year 9 students**.



LIFE EDUCATION TRUST NZ  
Inspired Learning. Inspiring Lives.



## Why alcohol education is important in New Zealand

New Zealand is known to have a binge drinking culture and issues around underage drinking.



While the legal purchase age is 18, we know drinking alcohol is common amongst young secondary school students: **48.8% of those aged 15 years or under 'currently drink' and 21.4% report they have participated in binge drinking in the last four weeks.**

Auckland University, Youth 2000 Series



Understanding peer pressure and tactics to respond are important. When asking how they access alcohol: **43.5% of 14 year olds say friends supplied them with alcohol.**

Auckland University, Youth 2000 Series



**Alcohol-related harm** in New Zealand is estimated to **cost \$5.3 billion per year**. This equates to a cost of \$14.5 million every day.

Ministry of Health, NZ Health Survey 2016/17



In 2011/2012, **one in five (19%)** New Zealanders aged 15 years or more who drank alcohol in the past year **has a potentially hazardous drinking pattern.**

Ministry of Health, 2013

## Supporting young people with alcohol education

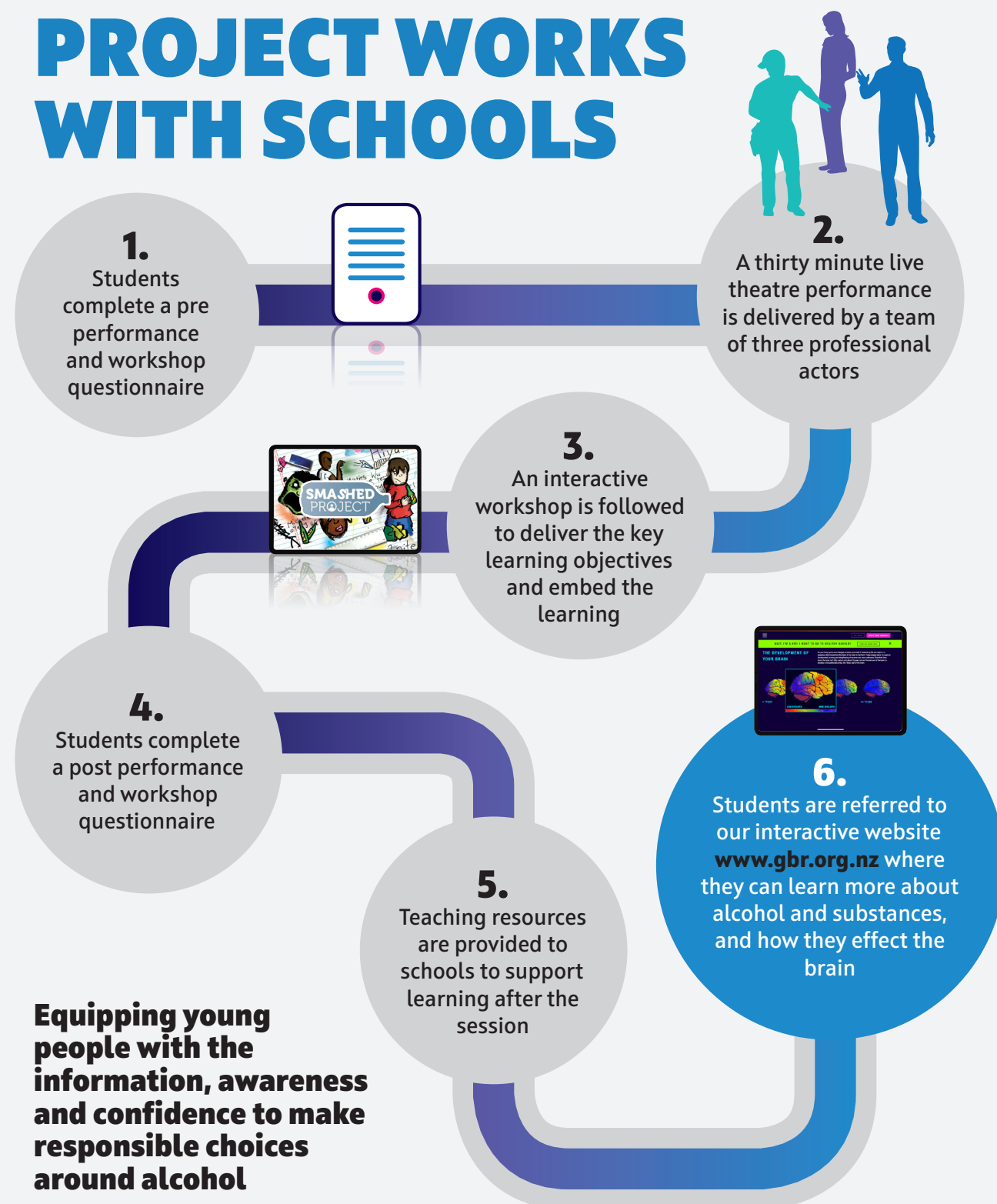
The SMASHED PROJECT is a relatable theatre performance which demonstrates several different situations that could arise when young people consume alcohol. The performance highlights potential dangers giving students context to how situations can get out of control quickly when alcohol is involved.

Directly after the performance a workshop is facilitated which extends the learning experience by allowing the audience to question and challenge the characters and their behaviour in a safe learning environment.

Students leave a SMASHED session more knowledgeable about the dangers of alcohol consumption, helping them to develop a more responsible attitude to alcohol consumption. With this new knowledge they are empowered to make more informed choices in situations where alcohol is present going forward.



# HOW THE SMASHED PROJECT WORKS WITH SCHOOLS



# THE SMASHED PROJECT PROGRAMME OUTCOMES

**20,463 students engaged**  
**135 performances and workshops**  
**94 schools**

Through pre and post questionnaires we were able to measure the immediate impact that SMASHED has on student knowledge, awareness, attitudes and intention.

## STUDENTS

We found that after students took part in SMASHED:

- The proportion of students who said they know lots about the dangers of underage drinking increased 15%.
- Student's accuracy rate in correctly identifying the key dangers and risks associated with underage drinking increased 9%.
- There is a 16% increase in awareness of how alcohol can affect mood negatively, a 14% increase in awareness of the increased risk of posting inappropriately on social media, a 13% increase in the awareness of how alcohol can impact mental health.
- 91% of students can correctly identify the legal purchase age in New Zealand.
- 84% of students say they feel equipped to make the right decisions about drinking alcohol.
- 95% of students say they understand the term 'peer pressure'.
- **91% of students said they are less likely to drink alcohol underage.**

## TEACHERS

Of teachers who were involved with SMASHED:

- 93% say their students know more about the dangers of underage drinking than they knew before.
- 97% of teachers say the programme was well produced and presented.
- 79% of teachers say they now feel more confident talking with their students about underage drinking.
- 99% say it's important that programmes like this visit schools and 92% would like the programme to return to their school next year.

**With the success of the SMASHED PROJECT we are now looking to use Theatre-in-Education as a method to deliver additional programmes in 2020.**



breaking underage drinking

# OUR TOUR MAP



**94 SCHOOLS**



**135 PERFORMANCES & WORKSHOPS**

ALCOHOL EDUCATION NEEDS  
TO TAKE PLACE WELL BEFORE  
THE LEGAL DRINKING AGE.



**20,463 STUDENTS**

**"Our students absolutely loved the performance and the three presenters were amazing. There was a lot of important information and messages based around the effects of alcohol that really hit some of our kids and us teachers as well."**

Reg Keil, Year 9 Dean, Wairoa College

**LIFE EDUCATION TRUST NZ**  
Inspired Learning. Inspiring Lives.



**Clocking over 11,000 kilometres, the SMASHED team travelled around New Zealand delivering the programme during term two and three. Some days they ran up to three sessions at different schools.**

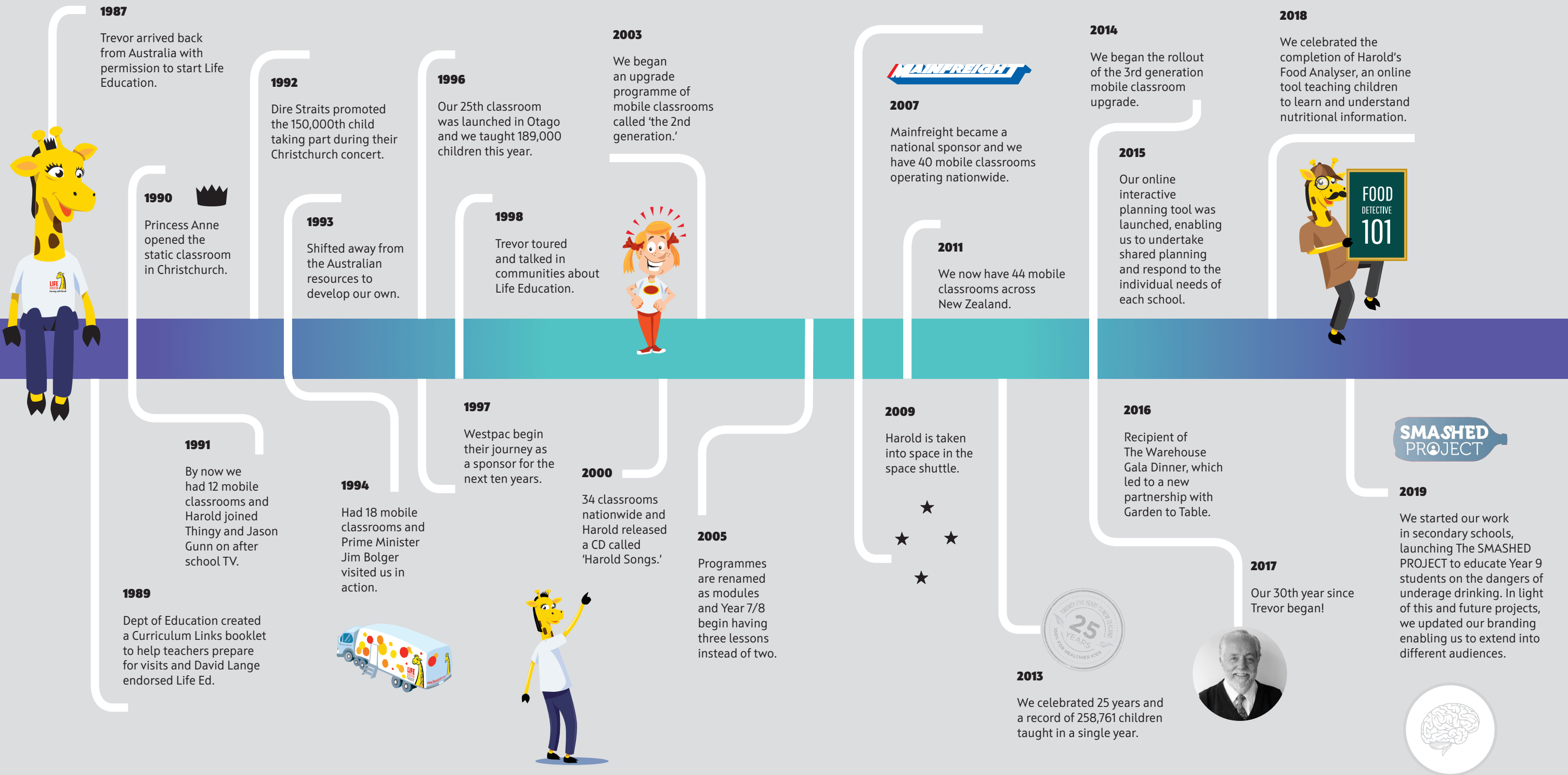






# OUR JOURNEY 32 YEARS OF LIFE ED

Looking back to  
celebrate what we  
have achieved



# OUR FOUNDER TREVOR GRICE MNZM, CNZM



**The Founder of Life Education Trust, Trevor Grice, was born in Christchurch in 1932, the sixth of seven children in his family. When Trevor was only five years old, his father was tragically killed in a freak dynamite accident at his workplace. Trevor's mother worked hard to support her seven children, but she eventually became very sick.**

At the age of ten Trevor suffered from malnutrition and was admitted for several months to Cholmondeley Children's Home - an orphanage. On returning to his family a few months later, he continued his schooling. On finishing high school Trevor continued his studies at Christchurch Polytechnic, which then enabled him to take up a cadetship with the NZ Post Office, becoming a senior telegraphist.

In 1967 Trevor joined 'Operation Deep Freeze', the United States Antarctic Programme based at Christchurch Airport as a Supply Officer. During the following years Trevor became progressively involved with managing any issues that arose with service men and women on the ice in Antarctica.

Later, Trevor moved into the role of Executive Administrator for NZ Affairs, taking on responsibility for the recognition and treatment of drug and alcohol dependencies. In this role, the US Navy gave Trevor opportunities to continue his learning, and he attended many treatment centres and institutes in America. Through this line of work, Trevor began to gain a reputation as a family crisis counsellor.

In early 1987, Trevor was approached to bring the Australian Life Education programme to New Zealand. Trevor travelled to Australia to meet with the founder, Ted Noffs, but unfortunately found that Ted was in hospital, having suffered a severe stroke. Trevor spent several days reading Ted's books, meeting with programme and sponsor personnel and sitting in on various classes. During this time he fell in love with the

idea of Life Education. He loved the innovation of the programme, of capturing children's imagination using science and building their self-esteem at a young age.

Trevor resigned from his job with the US Navy in May 1987, to work for Life Education New Zealand. The following year, the first two mobile classrooms were imported from Australia to begin teaching children in Christchurch and Auckland.

Within just ten years, more than 30 regional Trusts had been established and \$30 million had been fundraised, as Trevor shared his vision and enthusiasm with volunteers throughout the country. This resulted in 200,000 children each year taking part in lessons in mobile classrooms.

In 1996, Trevor and Tom Scott, along with the Publishing Trust, produced their NZ best seller book "The Great Brain Robbery". The book became available globally, and was translated into several languages.

Over the years, Trevor has been awarded and recognised for his extraordinary work. In 1997 Trevor was made a Member of the NZ Order of Merit (MNZM) and in 2000 he was named as a UNESCO Peacebuilder. Rotary International made Trevor a Paul Harris fellow in 2004. In 2000 and 2005 he was named Wellingtonian of the Year for Community Service and Youth Services. In 2010 he was further recognised as a Companion of the New Zealand Order of Merit (CNZM).

**Trevor retired from his 'day job' with Life Education in 2014 at age 82.**



# OUR PEOPLE

Our team of over 300 volunteer Trustees and 50 Educators give us their time, knowing their contribution is helping to make a difference to the lives of tamariki and rangitahi.

Volunteers donate more than 23,000 hours each year to support our work.

Over \$6,500,000 is raised through events, partnerships and donations each year.



**PATRON** DAVID WALE, CBE  
**FOUNDER** TREVOR GRICE, MNZM, CNZM

## NATIONAL BOARD OF TRUSTEES

**Chair,** Pat Seymour, QSO, OBE

**Deputy Chair,** Rob Simcic

Cameron Bagrie

Christine Goodin

Jeff Hart

Maria Johnson

Dee Lambie

Graham Lawrence

John Spring

Jacqueline Taylor

## NATIONAL OFFICE STAFF

**Chief Executive,** John O'Connell

**Education Support Manager,** Michelle Dow

**Finance Manager,** Penny Robertson

**Project and Partnerships Manager,** Jess Limbrick

**Programme Development Manager,** Jo Mortimer

**Leader OMT,** Cilla Bennett

**Marketing and Communications Specialist,** Hayley Sims

**Trust Support,** Robyn King

OUR PEOPLE ARE OUR MOST VALUABLE RESOURCE

# OUR REGIONAL TEAMS

Trust	Chairperson	Educator
Auckland Central	Lance Hutchison	Nicole Fonua Lynne Darroch
Auckland West	Jason Woolston	Michelle Brown Murielle Gill
Canterbury	Dean Percy	Claire Leach Amanda Thompson Siobhan Cummings
Central Plateau	Brent Fryer	Michelle Wallace
Coastal Otago	Aileen Winmill	Maria Sinclair
Counties Manukau	Gavin Arnet Lincoln Jefferson (General Manager)	Ben Wombwell Brittney Knight Kat Greenham Natalie Coyle-Smith Carleen Craig
Eastern Bay of Plenty	John Spring	Rhonda Connor
Far North	Diane Henderson	Mandy MacCarthy Morrogh
Gisborne East Coast and Wairoa	Pat Seymour	Anna McVey Fergus Knight
Hamilton	Melanie Rouse	Anna Carr Belinda Kane Stephanie Philburn
Hawkes Bay	Angela Williams	Anne Jamieson
Heartland Otago/Southland	Margaret Box	Pip Tisdall
Hutt Valley	Steve Graves	Andrea Young
Kapiti Horowhenua	Stewart Thompson John Granville	Paula Marsters-Sasa
Manawatu	Christine Vangioni	Tim Jones
Marlborough	James Ryan	Genevieve MacDonald
Mid and South Canterbury	Ray King Roger Scammell	Jane Hooper Rudi Keggenhoff
Nelson/Tasman	Michelle Fitzgerald	Ingrid Kemp
North Shore	Christine Meyer-Jones Stuart Farquharson	Charlie Pollard Corinne Kirkham Jenni Gilbertson Tania Davey
North Wellington	Allan Nichols	Marsha Chiet
Rodney	John Davies	Chris Turner Elizabeth Marriott Celia Thompson
Rotorua Area	Jules McLaughlin	Berni Volschenk
Southland	Jaime McNaught	Teresa Wallace
Taranaki	Matt Goodin	Michelle Williams Megan Lilley Amber Ormond
Waikato East	Keith Trembath	Mike Budd
Waipa/King Country	Ken Miller Grant Wilks	Nicky Wise Sarah Bolton
Wairarapa, Tararua & Central Hawkes Bay	Liz Kirkland	Kirsty Jamieson Sam Michau
Wanganui and Districts	Phil Walker	Mark Keelty
Wellington City	Todrick Taylor	Charlotte Rolton
West Coast	Fergal O'Gara	Carmen Hartley Monique Locharte
Western Bay of Plenty Region	Sue Boyne	Michael Chemis Mac Harris
Whangarei	Mike Procter	Nadine Campbell



# MEET SOME OF OUR TEAM



## Marsha Chiet – Healthy Harold Educator

Life Education North Wellington Trust

Marsha began her journey as an Educator at the start of 2019, and brings with her an extensive career in education. Marsha has taught in many different countries and worked in education roles outside of teaching as well.

Marsha decided to take on a role with Life Education as it supports the wellbeing and development of our young people and aligns really well with her personal philosophy as a teacher. She loves providing opportunities for children to learn about the wonders of life, themselves and other people.

Marsha loves that students are bursting to climb into the mobile classroom, sharing their thoughts and supporting each other, and that she is able to connect with so many students and school staff around her region. She feels that Life Education recognises, supports and celebrates that every person is unique, and equips our young people with the skills and tools they will need to soar to great heights and reach their full potential.

Marsha loves working with her fantastic team of Trustees who support her work, and being a member of the Life Ed community.

**"I have always been passionate about the holistic development of our young people and am a huge advocate of healthy body, healthy mind."**

## Dean Percy – Chairperson

Life Education Canterbury Trust

Dean joined our Canterbury Trust in 2013 as a Trustee, keen to contribute as he believes that Life Education plays a very important part in the growth of our most important resource – our children. In late 2017 Dean became the Chair of his Trust.

Dean's key roles on the Canterbury Trust are to ensure they have amazing Educators, that the Trustees are passionate about their mission and working towards the goal of engaging with 85% of their local student population. He loves that in this role he is able to make a difference, as Life Education provides the tools to help children deal with the big issues that they are likely face in an engaging and powerful way.

Dean is a marketer by trade and owns an agency in Canterbury that works to highlight the great work being done by New Zealand businesses and organisations.

**"We live in a complex and fast changing world. The education that Life Education provides helps support the mental health and wellbeing of our children which helps shape their success in life."**



## Dylan Patel – Deputy Chair

Life Education Auckland Central Trust

Dylan has been a volunteer Trustee with our Central Auckland Trust for five years, recently becoming the Deputy Chair. He enjoys the rewarding work he does, being able to give back to the community he lives in through his role. Having grown up with Life Education and Harold visiting his school, messages that he learnt about being special and unique as an individual always stuck with him. Dylan loves being a part of enabling children to experience Life Education too.

Dylan is a Private Banking Manager at ASB bank and is able to put his skills to work in his role as a Trustee, drumming up support for the Auckland Central 'Help Harold Help Kids' club which is incremental to the running of their Trust. Dylan has loved the recent collaboration that the Trust has been working on with Downlights, which has been a very rewarding and fun partnership, and successful fundraiser too!

**"Every child and every person is unique.... as are you!"**



## Cilla Bennett – Leader OMT, SMASHED Coordinator

The SMASHED PROJECT

Cilla is a woman of many talents. She has a strong education background as a qualified primary school teacher, and also has experience in office administration, event management and business management. After having her children Cilla became a stay at home Mum enabling her to be fully involved in her children's learning, while also volunteering in many different capacities through both crèche and schools.

Cilla coordinates the booking schedules for SMASHED and is our liaison with schools. In this role she loves being able to combine all her skills and values, making a positive contribution to the health and wellbeing of young people.

Cilla loves that SMASHED gives young people alcohol education in Year 9, enabling them to be informed before they get to the age that they are already experimenting with it or are highly exposed to it. She believes that theatre-in-education is an effective way of getting messages across to a wide range of learners as it's both visual and interactive.

**"I love that Life Education Trust is a not-for-profit and involves a fantastic group of volunteers who give back to the community."**



## Troy Vandergoes – Actor and Team Leader

The SMASHED PROJECT

Troy plays 'Caleb' in SMASHED, a character who gets himself into some challenging situations as a result of drinking. Troy leads our team of three actors involved in SMASHED, ensuring that the tour runs smoothly.

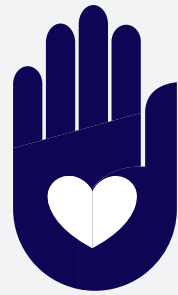
Troy holds a Bachelor Degree in Performing and Screen Arts from Unitec Institute of Technology, and has performed in a number of TV and stage shows, including Cold Case and most recently 'The Tempest' directed by Paul Gittins.

Troy is involved in the SMASHED PROJECT because he believes that it holds a great message for youth.

**"I hope that young people can learn from our mistakes in the performance, and not have to go through these things themselves."**



# VOLUNTEER RECOGNITION



Our Volunteer Recognition Awards were introduced in 2011 to recognise and celebrate the incredible work that our volunteers do, putting in hours of service to support their local Trusts' work with the young people in their communities.

Every year Trusts are invited to nominate individuals for Life Memberships, Distinguished Service and Community Service Awards, which are presented at our annual Trustees conference in July.

## Our 2019 awarded Life Members

### Ray King, Mid South Canterbury Trust

Ray has provided support to the work of Life Education for many years. He joined the Mid South Canterbury Trust in 2003 as a Trustee and went on to become the Chairperson in 2010. Ray also spent nine years on our National Board.

### Grant Coward, Taranaki Trust

Grant joined the Taranaki Trust in 1999 and served as the Chairperson from 2012-2018. Grant was an amazing networker in the community, working to promote Life Education and seek sponsorship for his Trust.

### Janet Lean, Taranaki Trust

Janet joined the Taranaki Trust in 2000 and became secretary in 2004, a role she still holds today. Janet is responsible for the ongoing grant and funding applications where she has had great success. She has worked tirelessly and with much energy to add so much to the Taranaki Trust.

### Keith Trembath, Waikato East Trust

Keith has been an outstanding leader to Waikato East Trust since joining in 2004 and becoming Chairperson in 2010. Keith has contributed thousands of hours to the functioning of the Trust.

### Roger Scammell, Mid South Canterbury Trust

Roger has served on the Mid South Canterbury Trust since 2006. Roger's expertise has assisted greatly in the running of the Trust's Harold Club and supported many Trust and local events. Roger has been responsible for the maintenance, servicing and repairs to both the classroom and the towing tractor for the last nine years.

## Life Members

### Our full list of awarded Life Members

Val Whyte*	Brian Shearer
Ian Holyoake	Steak (John) Goodin, QSM
John Spring	Graeme Pentecost
Stephen Burnett	Kay Crosby
Joslyn Tjeerd	Astrid Martin
Lance Hutchison, QSM	Jo Coughlan
John Beattie	Ian McBride
Bruce Darvill, QSM*	Chris Kirk-Burnnand, MNZM
Rob Wilton	Allan Nichols
Trevor King, QSM *	Brian Kelsey
Robyn Paterson	Ian Emmerson
Margaret Radford	Debbie Given
Peter Cox	Christine Goodin
Roy Savage*	Keith Trembath
Michael Cooney, QSM	Roger Scammell
Pat Seymour, OBE	Ray King
Paul Cressey, ONZM	Janet Lean
Jeanette McIntyre	Grant Coward
Steve Graves	

\* Deceased

## Distinguished Service

Catherine Quinn  
Frances Nichol  
Heather Samu  
Michael Moka  
Annemarie Hogenbirk  
Colleen Acton

## Service Award

JC Favier - Auckland Central

## Outstanding Community Service

### Local businesses and long term supporters

Heather Purvis  
Albany Toyota  
Boat Haulage Ltd  
Partridge Jewellers Ltd  
Wayne Goodwin  
Wayne Richards - Valley Toyota  
David Jury  
Colin Whyte  
Brent Shepherd  
Lindsay Humphries



# COMMUNITY PARTNERSHIPS

**It's thanks to the support and contributions from our generous community partners that we are able to commit to future initiatives and extend our work to reach more of those who need our support.**

Thank you to the continued support of Mainfreight, The Warehouse, Cigna Insurance, Herbalife, and Apparelmaster.

Thank you to The Tomorrow Project for supporting us to provide the SMASHED PROJECT.

Our Charity Gaming partners, in particular Pub Charity, The Lion Foundation, The Southern Trust and the many smaller Trusts who support us nationwide are an integral part of supporting communities and volunteers.

Our individual donors who make up our Harold Club continue their generous support.



**"Thanks to the generosity of our partners and individual donors we were able to educate and inspire over 262,600 young people to make positive choices in 2019."**



# LOCAL HEALTHY HAROLD SUPPORTERS

Recognising our supporters nationwide (over \$5,000)

A-Jet Carpet Cleaners	Counties Manukau
AAW Jones Community Trust	Heartland Otago/Southland
Akarana Community Trust	Counties Manukau
Alexander McMillan Trust	Heartland Otago/Southland
Alpine Energy Ltd	Mid and South Canterbury
Andrew Simms Botany-Newmarket	Counties Manukau
APECT	Rodney
Auckland Airport	Counties Manukau
Auckland Racing Club	Auckland Central
Bathurst Resources Ltd	West Coast
Blackadder Trust	West Coast
Blue Waters Community Trust	Counties Manukau
BlueSky Community Trust	Counties Manukau
Canterbury Earthquake Recovery Trust (CERT)	Canterbury
Central Lakes Trust	Heartland Otago/Southland
Cephas Trust	Nelson/Tasman
Chatterbox PR - Jackie Russell	Counties Manukau; Rodney
Clutha District Council	Heartland Otago/Southland
Community Organisation Grants Scheme (COGS)	Central Plateau; Counties Manukau;Eastern Bay of Plenty; Gisborne East Coast and Wairoa; North Wellington; Southland; Taranaki; Wanganui and Districts; West Coast
Community Trust Mid and South Canterbury	Mid and South Canterbury
Community Trust of Southland	Southland
Constellation Community Trust	Rodney; North Shore
D & M Godfrey	Rodney
D V Bryant Trust	Hamilton
Dad's Pies	Rodney
Danielle Johnson	Auckland Central
Development West Coast	West Coast
DGE Andrew Merritt & Grant Megson	Counties Manukau
Dragon Community Trust	Counties Manukau
Dublin Street Charitable Trust	Canterbury
Duddings Trust	Wanganui and Districts
Eastern & Central Community Trust	Gisborne East Coast and Wairoa; Manawatu; Wairarapa Tararua/ Central Hawkes Bay; Kapiti Horowhenua
Eastern BOP Energy Trust	Eastern Bay of Plenty
Eastland Community Trust	Gisborne East Coast and Wairoa
EB Milton	Canterbury
Edendale Veterinary Club	Southland
Education Services	Rodney
Epplett & Co Accounting	Hawkes Bay
Fagan Motors – Masterton	Wairarapa, Tararua & Central Hawkes Bay
Fire and Emergency Far North	Far North
First Light Community Foundation	Gisborne East Coast and Wairoa
First Sovereign Trust Limited	Counties Manukau; Waikato East
Fitzgerald Construction Ltd	Nelson/Tasman
Fonterra Grassroots	Counties Manukau
Foundation North	Far North
Four Winds Foundation	Auckland Central; Canterbury; Counties Manukau; North Shore; Rotorua Area; Rodney; Far North; Hutt Valley
Franklin Local Board	Counties Manukau
Frimley Foundation	Hawkes Bay
Fulton Hogan Ltd Marlborough	Marlborough
Funfest Auckland Trust	Counties Manukau
Gallagher Charitable Trust	Hamilton

Geoff Dalbeth	Auckland Central
Gisborne District Council - Mahi Iti and Mahi Nui Grants	Gisborne East Coast and Wairoa
Gisborne Rotary Club Charitable Trust	Gisborne East Coast and Wairoa
Glenice & John Gallagher Foundation	Hamilton
Grace Hospital	Western Bay of Plenty
Grassroots Trust Limited	Central plateau; Counties Manukau; Waikato East
Haddocks Spray Painters	Eastern Bay of Plenty
Hamilton City Council Community Wellbeing	Hamilton
Harcourts Hamilton Rentals	Hamilton
Hauraki District Council	Waikato East
HB Children’s Holding Trust	Hawkes Bay
HB Williams Turanga Trust	Eastern Bay of Plenty; Gisborne East Coast and Wairoa
Hibiscus and Bays Local Board	Rodney
Howick Local Board	Counties Manukau
Howick Village Jane Newbury	Counties Manukau
Hugo Charitable Trust	Rodney
Hutt Mana Charitable Trust	North Wellington
Hynds Holdings	Auckland Central
Ian & Rosy Devereux	Counties Manukau
ILT Foundation	Southland
Infinity Foundation	Hutt Valley
Internal Affairs - COGS	Hamilton
iSignit	Counties Manukau
J & T Hickey Charitable Trust	Gisborne East Coast and Wairoa
JN Williams Memorial Trust and HB Williams Turanga Trust	Gisborne East Coast and Wairoa; Eastern Bay of Plenty
John & Leonie Hynds	Auckland Central
Joyce Fisher Charitable Trust	Auckland Central
Kapiti Pak’n Save	Kapiti Horowhenua
Kathleen Kirby Charitable Trust	Western Bay of Plenty
Kelliher Charitable Trust	Counties Manukau
Kendons Chartered Accountants Ltd	Hutt Valley
Lakeland Lions Club, Taupo	Central Plateau
Legacy Trust	Western Bay of Plenty
Len Reynolds Trust	Hamilton
Les McGreevy	Gisborne East Coast and Wairoa
Lion Foundation	Auckland Central; Canterbury; Coastal Otago; Counties Manukau; Far North; Gisborne East Coast and Wairoa; Hamilton; Hawkes Bay; Kapiti Horowhenua; Mid and South Canterbury; North Shore; Rodney; Rotorua Area; Central Plateau; Wairarapa Tararua/Central Hawkes Bay; Wanganui and Districts; Western Bay of Plenty; Wellington City; West Coast
Lottery Auckland Community Committee	Counties Manukau
Mainfreight Ltd	Auckland Central; Hamilton
Mangere-Otahuhu Local Board	Counties Manukau
Manurewa Local Board	Counties Manukau
Manukau Toyota Group	Counties Manukau
Mark Hannan	Counties Manukau
Mars Petcare	Wanganui and Districts
Matamata Piako District Council	Waikato East
Mazda Foundation	Rodney
Milestone Foundation	Counties Manukau
Motueka Farm Machinery Ltd	Nelson/Tasman
Mt Wellington Foundation Ltd	Auckland Central

Napier City Council	Hawkes Bay
Nelson Pine Industries	Nelson/Tasman
New Plymouth City Council	Taranaki
New Plymouth District Council	Taranaki
New Zealand Community Trust	Gisborne East Coast and Wairoa; Taranaki; Wanganui and Districts
New Zealand Lottery Grants Board	Auckland Central; Auckland West; Canterbury; Central Plateau; Coastal Otago; Ōāpiti; Ōyā Ōyā Eastern Bay of Plenty; Gisborne East Coast and Wairoa; Hamilton; Heartland Otago/Southland; Hutt Valley; Nelson/Tasman; Mid and South Canterbury; North Shore; Rodney; Rotorua Area; Southland; Taranaki; Wairarapa Tararua/ Central Hawkes Bay; Wanganui and Districts; Western Bay of Plenty Region; West Coast
New Zealand Post	Auckland Central
Ohai Railway Fund	Southland
Otago Community Trust	Coastal Otago; Heartland Otago/ Southland
Otara-Papatoetoe Local Board	Counties Manukau
Oxford Sports Trust Inc	Whangarei; Far North
P H Masfen Charitable Trust	Auckland Central
Pacific Toyota	Eastern Bay of Plenty; Western Bay of Plenty
Papakura Local Board Community Grants Fund	Counties Manukau
Papakura Town Centre Tracey Shackleton	Counties Manukau
Partridge Jewellers Ltd	Auckland Central
Pelorus Trust	Counties Manukau; Hutt Valley
Powerco Wanganui Trust	Wanganui and Districts
ProCare Charitable Foundation	Counties Manukau
Pub Charity	All Life Education Community Trusts
Pukekohe Toyota	Counties Manukau
Purvis Family Trust	Canterbury
Radio Network	Nelson/Tasman
Rata Foundation	Canterbury; Nelson/Tasman
Ray White City Realty Ltd	Auckland Central
Ray White Manurewa, Takanini, Drury & Remuera	Counties Manukau
Ray White NZ	Auckland Central
Riccarton Rotary Club	Canterbury
Rodney Health Charitable Trust	Rodney
Rory Hutchings	Auckland Central
Rosco Contractors Ltd	West Coast
Rotary Club of Auckland East	Auckland Central
Rotary Club of Gisborne	Gisborne East Coast and Wairoa
Rotary Club of Half Moon Bay	Counties Manukau
Rotary Club of Kapiti	Kapiti Horowhenua
Rotary Club of Manurewa-Takanini	Counties Manukau
Rotary Club of Newmarket	Auckland Central
Rotary Club of Pakuranga	Counties Manukau
Rotary Club of Plimmerton	North Wellington
Rotary Club of Tawa	North Wellington
Rotorua Area Energy Charitable Trust	Rotorua Area
Rural Fire Authority	Far North
Rural Woman New Zealand, Central, Western, Southland and Mid East Provincials	Southland
Second Nature Charitable Trust- David Comery	Counties Manukau
Sir John Logan Campbell Residuary Estate	Far North
Sky City Hamilton Community Trust	Hamilton
Sollys Contractors	Nelson/Tasman
South Waikato District Council	Canterbury
Southland District Council	Southland

Stan Semenoff Transport Ltd	Whangarei
Staples Rodway Ltd	Taranaki
Sue Baty Chartered Accountants	Rotorua Area
Summit Chartered Accountants Limited	Whangarei
Talleys Ltd	West Coast
Taranaki Charity Cycle Riders Trust	Gisborne East Coast and Wairoa
Tauranga Energy Consumer Trust	Western Bay of Plenty
Terenzo Bozzone	Auckland Central
Thames Coromandel District Council	Waikato East
The North and South Trust	Western Bay of Plenty Region
The Signman	Nelson/Tasman
The Sir Roger De Haan Charitable Trust	Auckland Central
The Southern Trust	Canterbury; Coastal Otago; Counties Manukau; Western Bay of Plenty; Heartland Otago/ Southland; Mid and South Canterbury
The Trust Charitable Foundation (Clutha & Mataura)	Heartland Otago/Southland
The Trust Community Foundation	North Shore
The Trusts Community Foundation	Counties Manukau; North Wellington; West Coast; Auckland West
The Whitehouse Tavern Trust	Counties Manukau
Thomas George McCarthy Trust	Kapiti Horowhenua; Wairarapa Tararua/Central Hawkes Bay; Wanganui and Districts
TIL Freightling Limited (Hooker Pacific)	Taranaki
Tindall Foundation	Hamilton
Tip Top Ice Cream Fonterra	Counties Manukau
TNL Group	Nelson/Tasman
Tommy’s Real Estate	Kapiti Horowhenua
Top Energy	Far North
Toyota Albany	North Shore
Trillian Trust	Counties Manukau; Rodney
Trish Brown	Auckland Central
Trust House Community Enterprise	Hawkes Bay; North Wellington; Wairarapa Tararua/Central Hawkes Bay
Trust Waikato	Central Plateau; Waikato East; Hamilton
TSB Community Trust	Taranaki
TTCF	Heartland Otago/Southland
United Way	Coastal Otago; Heartland Otago/ Southland
Valder Trust	Waikato East
Valley Toyota	Waikato East
Vector Wero Whitewater Park	Counties Manukau
Vodafone Events Centre	Counties Manukau
Waikato District Council	Hamilton
Waikato Farmers Trust	Hamilton
Waikato Toyota	Hamilton
Waikato WDFE Karamu Trust	Hamilton
Waiotahi Contractors Ltd	Eastern Bay of Plenty
Waipa Networks Trust	Waipa/King Country
Wairoa Warriors	Nelson/Tasman
Wel Energy Trust	Hamilton
Whanganui Community Foundation	Wanganui and Districts
William Pike	Counties Manukau
Youthtown	West Coast
Z Energy	Rodney
Z Energy- AIGA Group (Leatua & Marshal)	Counties Manukau
Z Energy- Kennerley Group (Wayne & Melanie)	Counties Manukau
Z Energy- Perpetual Energy	Counties Manukau



VOLUNTEER TRUCK DRIVERS

TRUST	TRANSPORT COMPANY	OWNER, DRIVERS & CO-ORDINATORS
Auckland Central	Mainfreight	Jason Street
	New Zealand Post	Ryan Beale, Devenesh, Bipendra
Auckland West	Steve Winks Transport Ltd	Steve Winks
	NZ Post Ltd	Ryan Beale and Devenesh
Canterbury	TMC Trailers	Paul Currie
	NZ Express Transport	Murray Young
	Hiltons Haulage	Joey Young
	North Canterbury Truck and Tractor Services	Arthur and Christine Jones
	Frews Transport	Chaz Frew
	PBT	Kylie Trompert and Mike Satherly
	Peter Fletcher Transport	Clint Murphy
	Martin Bruce Transport Hororata	Martin Bruce
	Ellesmere Transport	Billy Lott
	Lott Contractors	
Central Plateau	Frews Transport	
	Mainfreight Taupo	Nick Hyde
	Ongarue Transport, Taumarunui	Darryl Gulbransen
	Tirau Earth Movers, Putaruru	Steve Ensor
	RJ Lincoln Cartage Contractors, Tokoroa	Raymond Lincoln
	Kernohans Contractors Turangi	Jeff Kernohan
Coastal Otago	New Zealand Fire Service	Keith Maydon, Lindsay Rae, Mark Bradford, Ray Adams, Trevor Buchanan, Nigel Manson, Brett Delamere
	Dynes Transport	Des Morris
Counties Manukau	Mainfreight Ltd	Milan Cihak, Wiki Abraham, Clayton Tito
	Owens Transport Limited	Damian Murray, Mike Marsters, Bryan Tohi, Aisea Cokula, Joylene Malofie
	Truck Rentals	Hamish Quinn, Grant Rogers
	NZ Post Ltd	Bipendra Ram, Devenesh Dev, Ryan Beale
	Riordan & West	Dave West, Kat West
	William Gill & Sons	Mary Walker, Dan Ngawharau, Chrissie Kingi
	Mainstream	Rob Covich, Nathan Young, Greg Haliday
Eastern Bay of Plenty	Waiotahi Contractors	Kerrie Rodgers
Far North	Manganui Haulage	Wayne Henderson
	Kaitaia & Kao Fire Brigade	Matt Lewis
Gisborne East Coast and Wairoa	QRS Wairoa Transport	Ken Eruera
	Downers Gisborne	
Hamilton	Mainfreight Transport	Wayne Goodwin
Hawkes Bay	Emmersons Transport Ltd	
Heartland Otago/Southland	Fulton Hogan - Dunedin and Alexandra	John Corrigan
	McLellan Freight Ltd	
	Hokonui Rural Transport Ltd	
	Dynes Transport (Tapanui) Ltd	
	West Otago Transport Ltd	
	Tuapeka Transport 2003 Ltd	
	Clinton Waipahi Holdings Ltd	
	Beckers Transport Ltd	
Hutt Valley	MJH Engineering Limited	
Kapiti/Horowhenua	Goodmans Contractors Ltd Waikanae	Trevor Smith & Marcello Giacon
	Emmerson Transport Ltd Levin	Scott Searle
Manawatu	TruckStops (NZ)	
Marlborough	TNL (Marlborough)	
	Coles Contracting Ltd (Murchison)	
	Fissenden Bros Ltd (Kaikoura)	
	AGS Earthmoving Ltd - Hurunui	

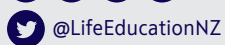
Mid and South Canterbury	Barwood Motors Fairlie	
	Brosnan Transport	
	Headford Propagators	
	HDPS	
	Hilton Haulage	
	John Fletcher Contracting	
	Bill Turnbull Transport	
	Mainfreight	
	Makikihi Transport	
	Paul Smith Earthmoving	
	Temuka Transport	
	Carrfields Contracting	
	Ryal Bush Transport	
	Wilsons Bulk Transport	
	Philip Wareing Ltd	
Nelson/Tasman	Mayfield Transport	
	TNL Group	
	Sollys Contractors	Ed Solly
	Sturgeons Amusements	Brad and George Sturgeon
North Shore	L.W. Bonney and Sons	
	East Coast Bays Towing	
	Boat Haulage	
North Wellington	NZ Post Ltd	Tony Hill & Craig Johnstone
Rodney	Hiway Stabilizers	Chris Humphries
	Mason Contractors	
Rotorua Area	Trust's own truck	Allan white
Southland	Trust's own truck	Colin Whyte, Owen Anderson, John Turner, Robert Wilson, Richard Dillon, Cory Price, Roger Sutton, Brent Sheperd, Donald Hay & Peter Sutherland (Truckstops), Neil Hodge, Wallace Drummond
Taranaki	Hookers Pacific	David Jury
	TIL Freightng Ltd	
Waikato East	Murphy Buses	Ian Murphy & Todd Murphy
	Carters Construction of Waihi	Warren Carter
	Carleys of Te Kauwhata	
	Fonterra	
	Tony Richards Toyota	
Waipa/King Country	Trust's own truck	Ken Miller, Ken Shearer, Craig Stone,Barry Gadsden, Dennis Goodman, Michael Knowles
	Progress Transport	Paul Bentham
Wairarapa, Tararua & Central Hawkes Bay	Stephenson Transport Ltd (Central Hawkes Bay)	Bruce Stephenson
	Higgins (Wairarapa)	
Wanganui and Districts	Dave Hoskins Transport Ltd	Dave, Gwen, Darryl & Karl Hoskin
	Kui Griffin & Co Ltd	Dave Griffin
Wellington City	NZ Post Ltd	Craig Johnson
West Coast	Trust's own truck	Warren Whitmore, Pat Walsh, Richard and Anne Tunnah, Russell Becker, Sid Steele, Kylie Beynon, Terry Weaver, Emmet Fortune, Ben and Ruth Johnson, Tim Burden, Tony Routhan, Kris Marris, Sean and Nina Climo
Western Bay of Plenty	Priority Logistics	Clinton Burgess, Willy Shears
	Page Earthworks Ltd	Steve Page
	Bosselmann Contracting Ltd	Mark & Sally Bosselmann
	Reads Transport Ltd	Bruce Read, Neville Campion, Chris Raymond, Matt Greenland, harley Roberts, Shane Putahi, Murray Bennet, Rodney Melgers
	Raymond Transport	Duane Bennet, Mark Goodwin, Sam Rowland, Mike King & Shaun Keepa
Whangarei	Stan Semenoff Transport	Charlie & Wilem



*Inspired Learning. Inspiring Lives.*



@Lifeeducationtrust



@LifeEducationNZ

enquiries@lifeeducation.org.nz

You can find more information and contact details for  
Life Education Trust (NZ) at **lifeeducation.org.nz**



32 Community Trusts  
Nationwide



Supporting the health and wellbeing  
of 250,000 children each year



*breaking underage drinking*

Empowering young people  
in secondary schools